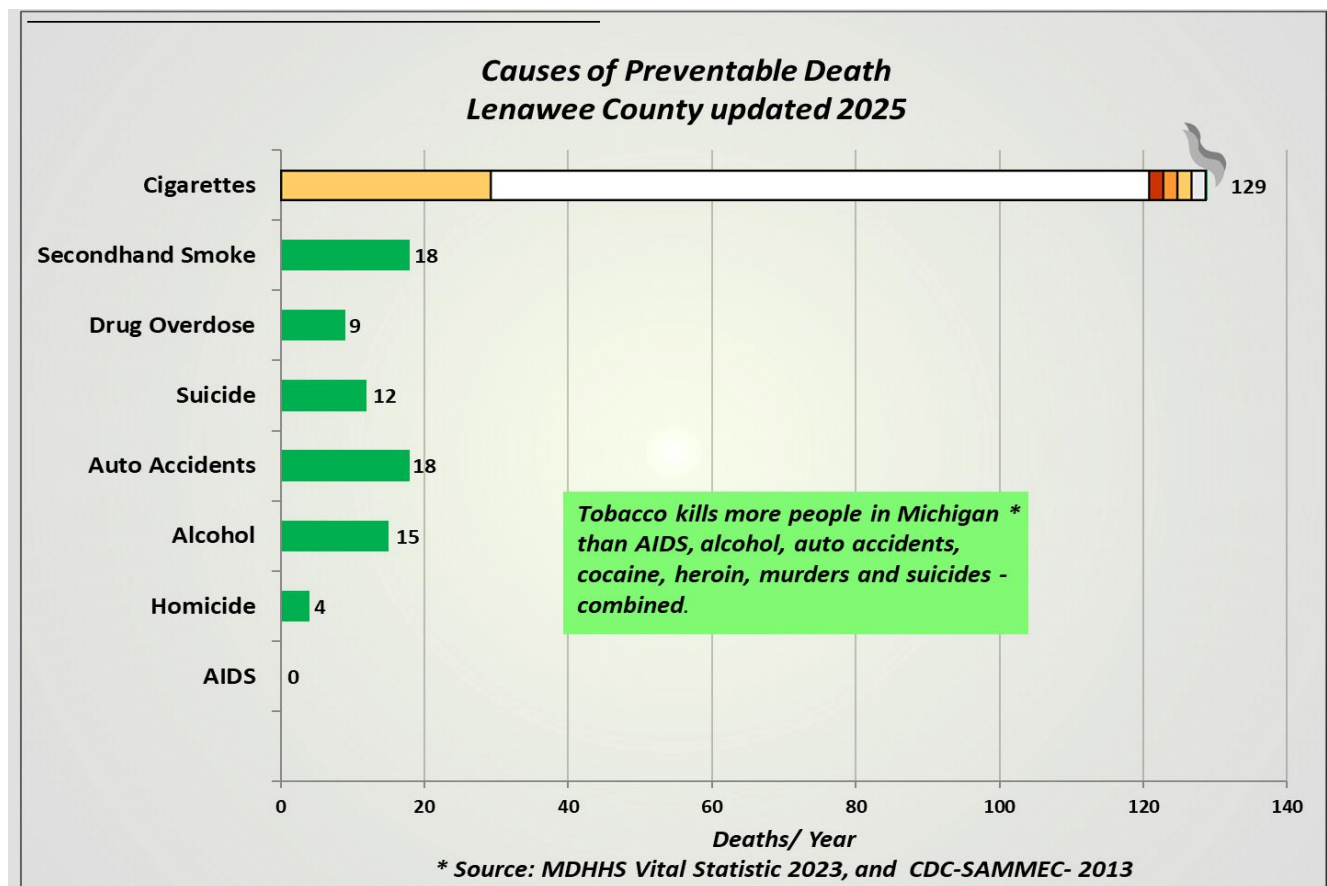


# Lenawee County Health Department Tobacco Factsheet-2025



## Adult Smoking Rate

**13.5%**

Source: Michigan Department of Health and Human Services (MDHHS)- Michigan Behavioral Risk Factor Survey BRFSS-2023

- ❖ Since 2011, the smoking prevalence among Michigan adults is decreasing.
- ❖ The adult smoking rate in Michigan is 13.6%

## Adult deaths that are directly caused by smoking

**129**

Source: Michigan Department of Health and Human Services, Division for Vital Records and Health Statistics and Centers for Disease Control and Prevention; CDC Wonder Online Database and SAMMEC Online Database, 2009.

- ❖ In 2023, there were a total of 970 deaths in Lenawee County, 129 or 13.3% of those deaths can be linked directly to tobacco use.
- ❖ Tobacco use is the single most preventable cause of disease, disability, and death in the State of Michigan.
- ❖ Smoking related illnesses include but are not limited to lung cancer, ischemic heart disease, chronic obstructive pulmonary disease (COPD) and stroke.

## Non-smokers deaths due to SHS exposure

**18**

Source: Michigan Department of Health and Human Services, Division for Vital Records and Health Statistics and Centers for Disease Control and Prevention; CDC Wonder Online Database and SAMMEC Online Database, 2009.

- ❖ Every year in Michigan over 1,740 non-smokers die because of exposure to secondhand smoke.
- ❖ Research shows that even 30 minutes of exposure to secondhand smoke can cause heart damage like that of a habitual smoker, the kind of damage that can lead to a heart attack.

<b>Women who smoked while pregnant</b>	<b>11.7%</b>
--	--------------

Source: Michigan Resident Birth Files, Vital Records and Health Data Development Section, Michigan Department of Health and Human Services, 2022.

- ❖ In 2022, 8.4% of women in the State of Michigan smoked while they were pregnant.
- ❖ Smoking during pregnancy is the foremost preventable cause of illness and death among mothers and infants.
- ❖ Smoking during pregnancy can increase the baby’s risk of developing respiratory or lung problems that can continue throughout their lifetime.
- ❖ Pregnant women who smoke or who are exposed to secondhand smoke are between 1.5 and 3.5 times more likely to have a low birth-weight baby.
- ❖ There is no “safe” level of smoking while pregnant.

<b>Smoking-Related Direct Health Care Costs</b>	<b>\$34.6 million</b>
---	-----------------------

Source: Michigan Department of Health and Human Services, Vital Records and Health Statistics and CDC.

Source: Tobacco Free Kids; Retrieved Feb. 03, 2025

- ❖ Smoking-attributable health care costs include personal health care expenditures attributed to diseases for which cigarette smoking is a primary risk factor. These expenditures can include ambulatory care, additional hospital care, nursing home care, prescription drugs, home health services and durable medical equipment expenditures.

<b>Medicaid’s share: Smoking related health care costs</b>	<b>\$11.2 million</b>
--	-----------------------

Source: Michigan Department of Health and Human Services, Vital Records and Health Statistics and CDC.

Source: Tobacco Free Kids; Retrieved Feb. 03, 2025

- ❖ Approximately 32.4% of the smoking-related health care costs incurred by residents within Lenawee County are paid by Michigan’s Medicaid State Plan.

<b>Smoking related health care costs per capita</b>	<b>\$412</b>
---	--------------

Source: Michigan Department of Health and Human Services, Vital Records and Health Statistics and CDC.

Source: Tobacco Free Kids; Retrieved Feb. 03, 2025

- ❖ In 2009, health care costs related to treating smoking-related diseases were \$346 per person within Lenawee County Health Department.
- ❖ The smoking-related health care costs per capita for the State of Michigan is \$341.

<b>Smoking-Related Taxes Paid by Michigan Households</b>	<b>\$1,165 per household</b>
--	------------------------------

Source: Tobacco Free Kids; Retrieved Feb. 03, 2025

- ❖ The state and federal tax burden to each household to pay for smoking-related governmental costs.

<b>Enrollees to the Michigan Tobacco Quit Line</b>	<b>18</b>
--	-----------

Source: Michigan Tobacco Quit Line: October 2023 – September 2024

- ❖ 27% of all Quitlink enrollees, have reported being tobacco-free seven (7) months after enrollment.
- ❖ For every smoker that successfully quits, their total lifetime cost savings to themselves and society can be as high as \$68,300.
- ❖ Using the Michigan Tobacco Quitlink residents within the State of Michigan have potentially prevented \$454.7 million - \$655.5 million in total lifetime medical expenditures and lost productivity costs.
- ❖ Estimates show for every \$1 invested in Michigan’s Quitlink from 2016 to 2020, more than \$10.5 was returned!