

Got a Tick? Submit a Pic!

In Michigan, ticks may carry diseases that cause illness in humans and animals. If you find a tick, you may want it identified. Michigan Department of Health and Human Services (MDHHS) can identify the tick if you send in a photo.

Michigan's five most common ticks can be seen [here](#). Not all ticks or tick species carry disease agents. MDHHS provides tick identification at no charge to Michigan citizens. For more information about ticks and tick-borne diseases, see our "[Ticks and Your Health](#)" brochure.

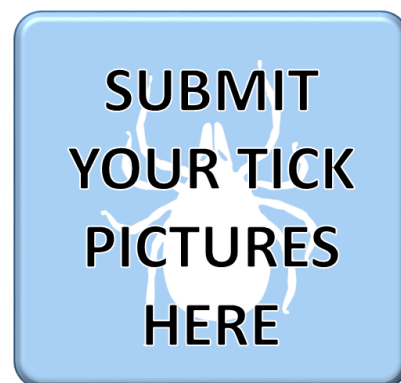
Although, submitting a photo of your tick may be easy, it is important to remember that MDHHS cannot definitively identify the tick by photo alone. Based on the time of year and the photo quality, MDHHS will be able to reasonably identify the tick. However, definitive tick identification can only be made using [MDHHS Citizen Submitted Tick Program](#).

Instructions for Taking a Tick Photo:

- In a well-lit room, place the tick on a plain white or light-colored surface.
- Focus the camera as close as possible to the tick, it is important that the picture is not blurry.
- Take picture #1.
- Flip the tick over so the opposite side of the tick is now upwards.
- Focus the camera as close as possible to the tick, it is important that the picture is not blurry.
- Take picture #2.

Instructions for Submitting the Tick Photo:

- Attach the two photos to an email by clicking on the "Submit Your Tick Pictures" button or email the following address: MDHHS-Bugs@michigan.gov
- In the body of the email, provide the following information:
 - Date the tick was collected:
 - Is the tick alive: Yes or No
 - Indicate if the tick was attached to (pick one):
 - Person
 - Animal
 - Other
 - Location where tick exposure probably occurred (pick one):
 - Home/Yard
 - School
 - Park/Recreation Area
 - Specific location where tick exposure probably occurred:
 - Specific location:
 - City:
 - County:
 - State:



After the email is sent, the MDHHS will make all attempts to identify the tick based on the condition of the tick and the condition of the photos.

